

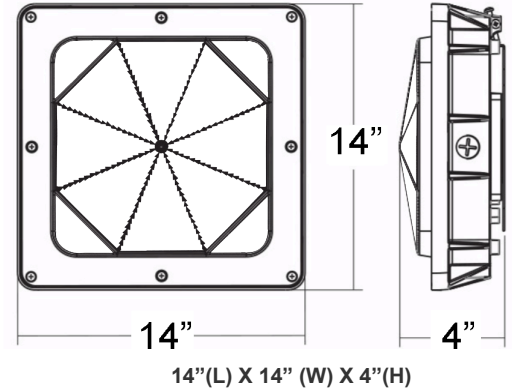
CDL2 SERIES OUTDOOR LIGHTING

CDL2-80CW
CDL2-80NW
CDL2-80WW

Customer Name: _____
Project Name: _____
Note: _____ Type: _____



Ideal for indoor parking lots, commercial buildings, schools, warehouses, retail centers, apartment complexes. Designed for 9 to 16-foot mounting.



Features

- Housing: Die-cast aluminum with prismatic polycarbonate lens redesigned for LED
- Designed for 9 to 16 foot mounting heights
- Factory-Installed Options: Battery Backup, Motion Sensor
- 7-year warranty

Technical Specifications

Electrical:

- Input Wattage: 80W
- Input Current: 0.6A MAX
- Input Voltage: 120-277VAC 50/60Hz
- Power factor: >0.90
- Other wattages: 25W/ 45W/ 60W

Mechanical:

- Die-cast aluminum with bronze
- Four 1/2" threaded hubs located on four sides of the housing
- Prismatic polycarbonate lens
- Lifespan: 70000 Hrs
- Operating temperature: -4°F ~ 104°F
- IP rating: IP65, Wet Locations

Lighting:

- Dimming: 0~10V dimmable
- LED type/ Brand: SMD 3030/ Philips Lumileds LEDs
- Total lumens: 9400 LM/ 9400 LM/ 9500 LM
- Color temperature: 3000K/ 4000K/ 5000K
- Color rendering index: >80
- Beam angle: 150°

Applications:

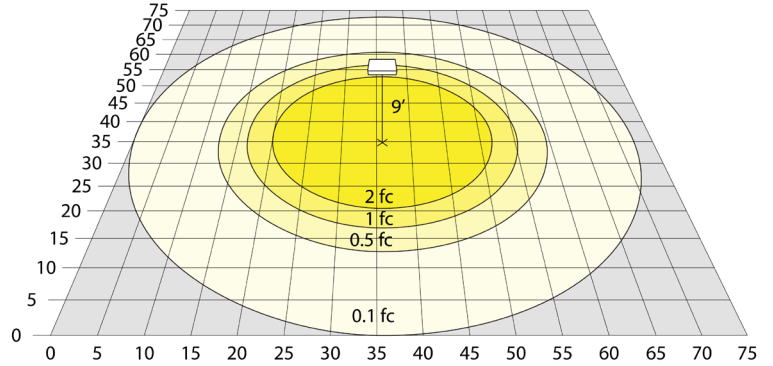
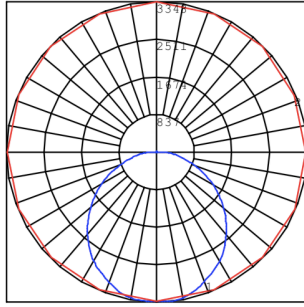
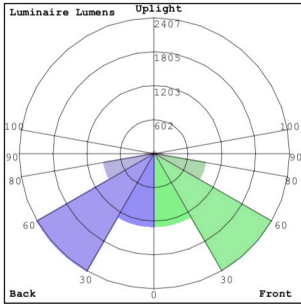
- Indoor Parking
- Commercial Buildings
- School
- Warehouses
- Complexes
- Apartment
- Garage

Other Models:

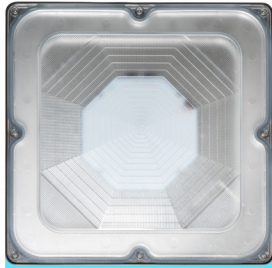
- | | | |
|----------------------------|----------------------------|----------------------------|
| • 25W 2880LM CDL2-25CW | • 45W 4400LM CDL2-45CW | • 60W 7400LM CDL2-60CW |
| • 25W 2800LM CDL2-25NW | • 45W 4300LM CDL2-45NW | • 60W 7100LM CDL2-60NW |
| • 25W 2780LM CDL2-25WW | • 45W 4200LM CDL2-45WW | • 60W 7100LM CDL2-60WW |



Photometrics: CDL2-80W



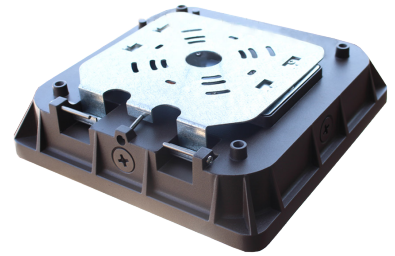
Other Views:



Front View



Side View



Back View

Performance Table: CDL2-80W

MODEL NO.	Wattage	Voltage	Lumens	Color Temp.	BUG Rating	LPW
CDL2-80CW	80W	120~277V	9500 LM	5000K	B3-U2-G2	118.75
CDL2-80NW	80W	120~277V	9400LM	4000K	B3-U2-G2	117.5
CDL2-80WW	80W	120~277V	9400LM	3000K	B3-U2-G2	117.5

Sample Ordering

Model Wattage Color Temp.

CDL2 - 80W -

WW = 5000K
NW = 4000K
CW = 5000K

Accessories Options

Blank = No Option For Accessories

WEC-7RC = REMORTE CONTROL for OPT-SEN-3MR-4

Factory Installed Options

Blank = No Option For Factory-Instalaaed

OPT-EM-OD1EXT = External Emergency Battery Backup

OPT-SEN-3MR-4 = External Programmable Microwave BI-Level, Remote Capable

OPT-SEN-2MD-35 = Internal Programmable Microwave BI-Level DIP Switch

Example:

1. CDL2-80CW (For CDL2 80W 5000K fixture 120V-277V)
2. CDL2-80CW WEC-7RC (For CDL2 80W 5000K fixture 120V-277V) (For Remote Control)
3. CDL2-80CW WEC-7RC OPT-SEN-3MR-4 (For CDL2 80W 5000K fixture 120V-277V) (For Remote Control) (For Programmable Microwave Bi-Level)

SENSOR AND REMOTE CONTROL OPTIONS



OPT-EM-OD1INT



WEC-7RC
(For WEC-3MR-4 sensor only)

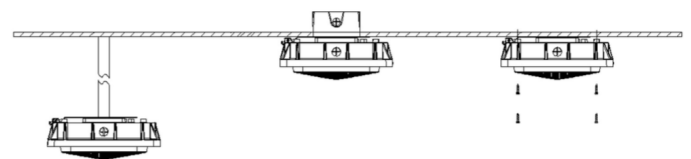


OPT-SEN-3MR-4



OPT-SEN-SMD-35

MOUNTING OPTIONS



WESTGATE

Phone: (877) 805-2252 | Fax: (877) 805-2252
www.westgatemfg.com | www.westgatecontrols.co

